

QUICK START OF THE LAN adapter

Description of LAN adapter

Adapter is designed for connection of Sxxxx, Rxxxx loggers to the personal computer by means of Ethernet network. LAN adapter has no control elements - all settings of LAN adapter are performed by means of the computer with installed driver and via www pages.

Operation of LAN adapter

LAN adapter is delivered with ac/dc adapter. Set correctly LAN adapter and PC driver (delivered on CD) before operation.

Check if the following items are available:

- PC with operational system Windows98 (or higher) connected to LAN network with TCP/IP protocol
- cable with RJ-45 connectors to LAN network
- free IP address, to assign to the LAN adapter. – **ask your network administrator to assign suitable IP address!**

!!!Attention: in case of assignment of already used IP address collapse of network can be caused!!!

1) LAN adapter connection

- Connect LAN adapter to your LAN network by means of RJ-45 connector.
- Connect power.
- Plug optical socket of LAN adapter to logger guide slots at its side.

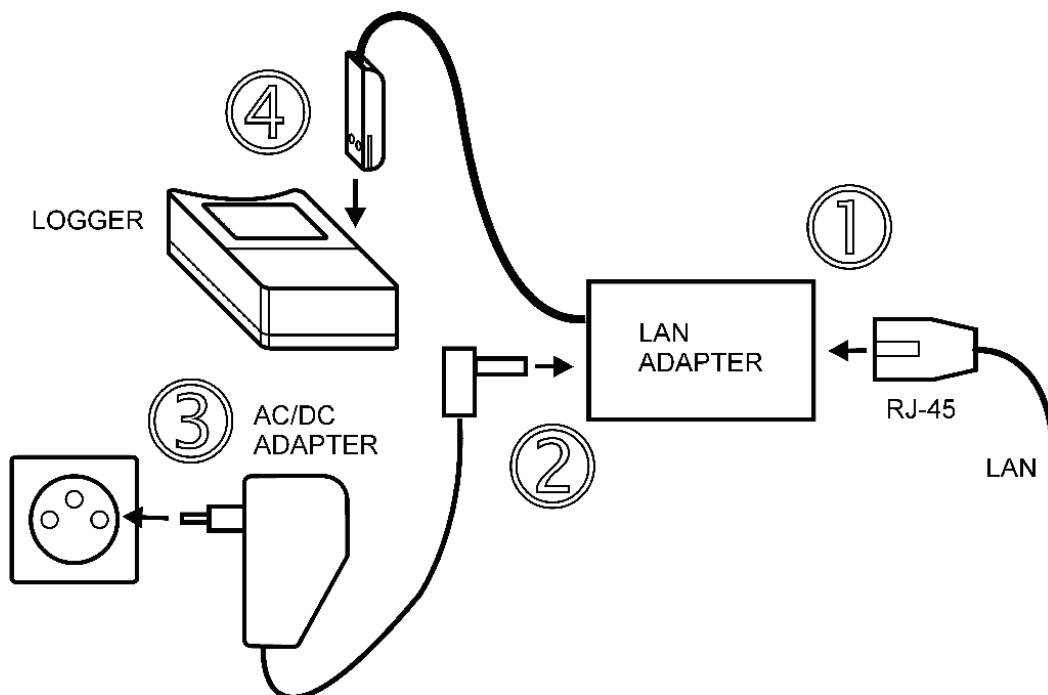


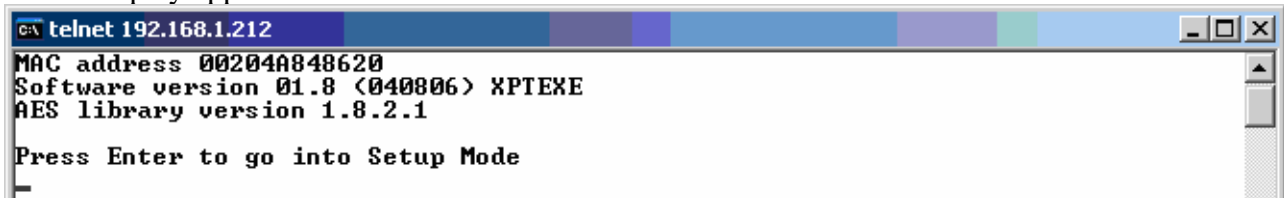
Figure 1 – wiring diagram - follow the numbering order 1 to 4

2) Configuration of LAN adapter via personal computer

Before starting to use LAN adapter it is necessary to change its IP address, which is preset to 192.168.1.254 from the manufacturer. Setting of LAN adapter contains many items. Only IP address is necessary to change. Do not change other items.

- Run program telnet (Start/Run..., type telnet 192.168.1.254 9999 and press ↵(Enter))

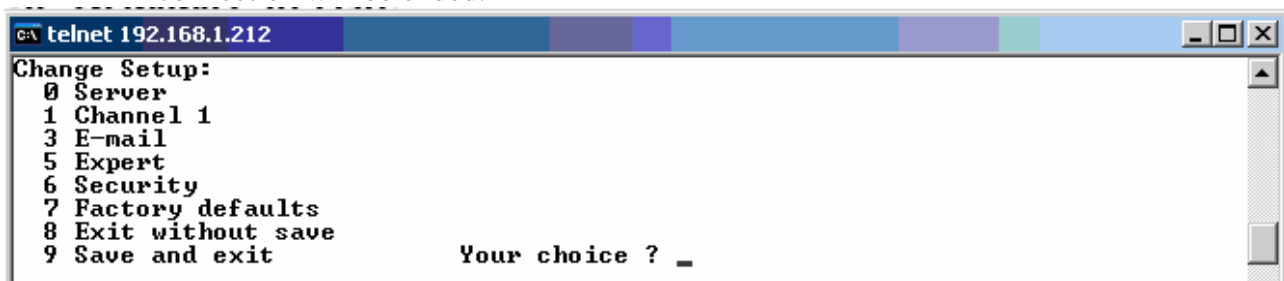
A display appears:



```
C:\> telnet 192.168.1.212
MAC address 00204A848620
Software version 01.8 (040806) XPTXEXE
AES library version 1.8.2.1
Press Enter to go into Setup Mode
_
```

Figure 3 - initial setup window in telnet

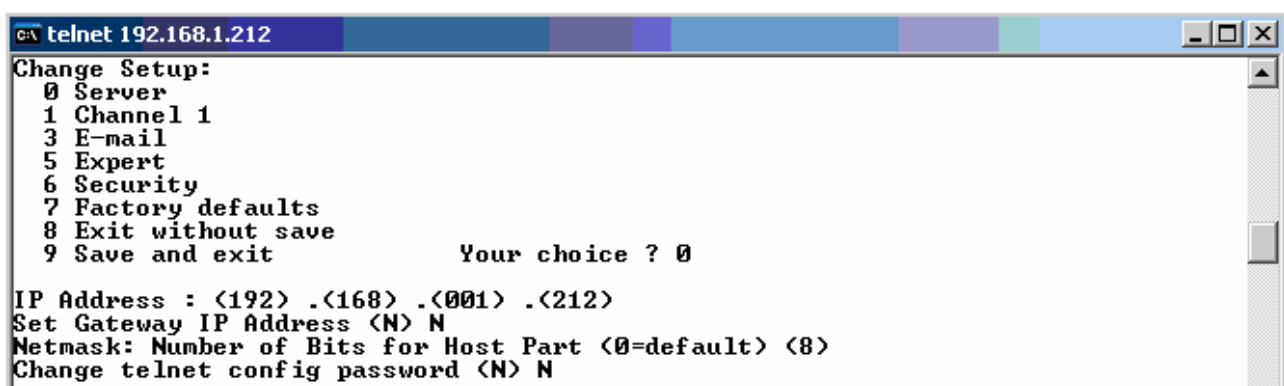
- Press ↵(Enter) and get to menu from figure 4. If Enter key is not pressed up to 4s, connection will be ended.



```
C:\> telnet 192.168.1.212
Change Setup:
 0 Server
 1 Channel 1
 3 E-mail
 5 Expert
 6 Security
 7 Factory defaults
 8 Exit without save
 9 Save and exit
Your choice ? _
```

Figure 4 - setting menu

- Select option Server (0 and confirm by enter key). Setting of IP address is illustrated at figure 5. You will be invited to enter new IP address of the LAN adapter. Enter IP address in accordance with the template in telnet in brackets. Confirm each triplet of digits by key ↵(Enter). Only confirm other parameters by key ↵(Enter). After main menu is displayed select key 9 option Save and exit and confirm by key ↵(Enter). Then exit telnet.



```
C:\> telnet 192.168.1.212
Change Setup:
 0 Server
 1 Channel 1
 3 E-mail
 5 Expert
 6 Security
 7 Factory defaults
 8 Exit without save
 9 Save and exit
Your choice ? 0
IP Address : <192> .<168> .<001> .<212>
Set Gateway IP Address <N> N
Netmask: Number of Bits for Host Part <0=default> <8>
Change telnet config password <N> N
```

Figure 5 setting of IP address

3) Installation of the software on the PC

For proper function of the LAN adapter it is necessary to install program Redirector to the computer to create virtual serial port in the PC. Program is at installation [CD

UNIT)\LANTRONIX\REDIRECTOR. From the point of view of PC logger program then connection via LAN seems as communication via classic serial port.

Installation of the Redirector program:

- Run „setup.exe“. Welcoming window appears.
- Press „Continue“. Another window appears.
- Click on „Next >“. Now installation runs normally - just select target directory.

Configuration of the Redirector program:

- Run configuration program Configuration (mostly Start/Program files/LANtronix Redirector/Configuration). See example at figure 6.

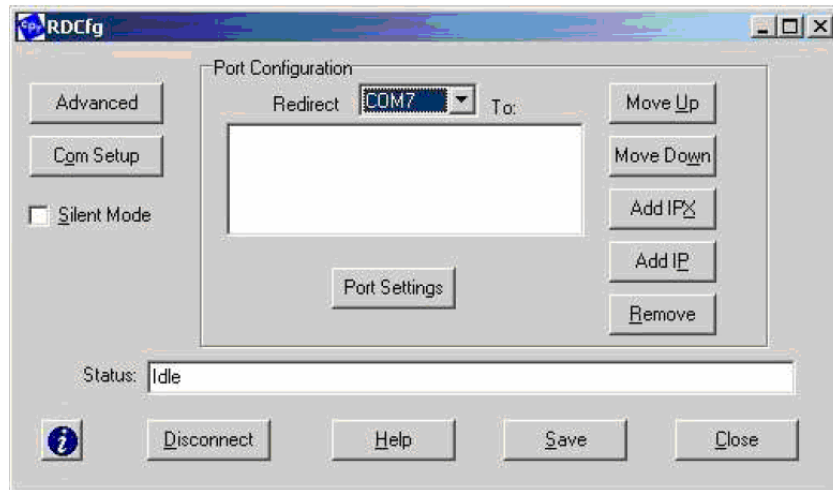


Figure 6 – Configuration of Redirector

- Select new COM port number in „Redirect“ field. Then press „Add IP“ button.
- Enter address of LAN adapter to the „Host IP“ field. Enter 10001 for port and press OK.
- In dialog from figure 6 press „Port Settings“. Following window appears (figure 7). Click item „Raw Mode“ and press OK.

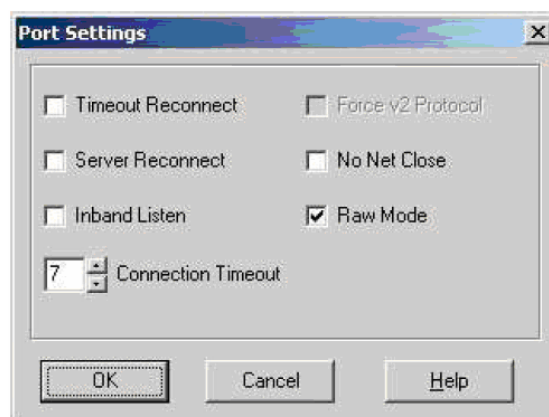


Figure 7 – Redirector – port setting

- In dialog from figure 6 press „Save“ and then „Close“.
- Now virtual serial COM port is installed in your system, connected via Ethernet to selected IP address of the LAN adapter. Simply select this new COM port in PC program for work with data logger.