

# QUICK START OF A NEW Sxxxx, Rxxxx DATA LOGGER

## Data logger description

Data logger is designed for long term record of measured value to internal non-volatile memory. No outer control element is available - all data logger setting is performed by means of a computer with installed PC program, connected by means of communication adapter (optional accessory).

## Startup of data logger

Data logger is delivered with installed battery and in switched OFF state. Set desired record parameters and other features by means of a computer with installed PC program before first data logger startup.

Please check if following equipment is available:

- personal computer with Windows98 (or higher) operational system and free serial or USB port (minimum hardware requirements: Pentium 166, 32MB RAM, 10MB free space on the hard disk)
- communication adapter COM adapter or USB adapter

## 1) Installation of program to personal computer

Installation program is common for both program versions, basic (free) and optional (paid). Installed program asks for installation code before the first run - if entered, program runs as optional version. If installation code is not entered, program runs in basic version. Installation code is possible to enter also anytime later.

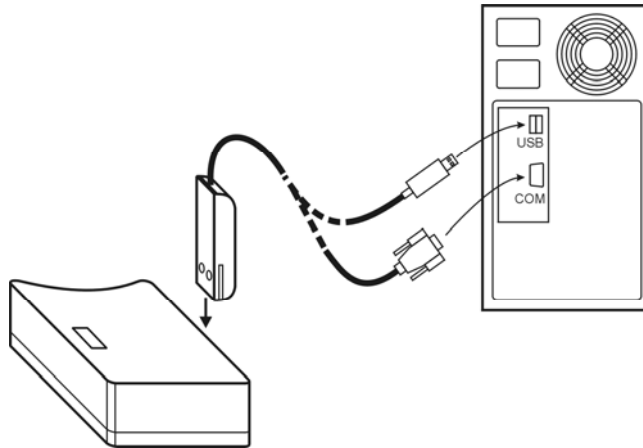
Installation program is available to download free at [www.cometsystem.cz](http://www.cometsystem.cz) or the CD can be ordered as optional accessory.

- installation from the Internet:  
visit [www.cometsystem.cz](http://www.cometsystem.cz) and click to *PROGRAMS*. Download *Program for dataloggers Comet* to your computer. If you are going to use USB communication adapter, download also item *USB adapter driver* (if needed also with file describing the installation). After running of downloaded file *logger.exe* follow Installer instructions.
- installation from the CD:  
insert installation CD to CD-ROM drive and wait for automatic run of Installer. If Installer is not run automatically (depending on setting of operational system), find in file browser the *CDSetup.exe* file in main directory of installation CD and click to run. Then follow Installer instructions. Select *Program for dataloggers*.

If you use USB communication adapter, then it is necessary to install USB driver in first connection to the computer. Installation procedure and trouble shooting for each operational system is discussed in *USBxxxx.pdf* file on installation CD and the web.

## 2) Data logger connection to the computer

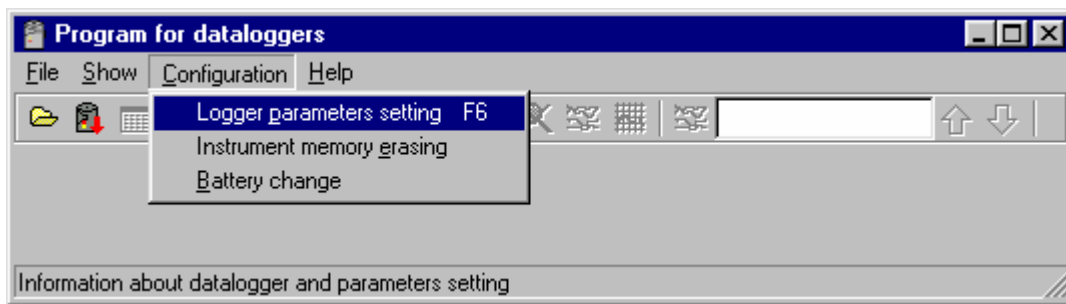
Use proper communication adapter for data logger optional accessory. Use COM adapter for connection via serial RS232 port and USB adapter for connection via USB port. Connect adapter connector to corresponding computer port and insert adapter to the guide slots on the side of logger from data logger front side.



Note: USB connector can be located also at the computer front side

### 3) Setting of data logger parameters

After connection of data logger to the computer it is possible to run program and read information on data logger state and set the desired configuration (menu *Configuration / Setting of data logger parameters*).



After this selection program starts to search computer free ports and search connected data logger. For the first time operation can last up to 10 seconds. After successful finding program memorizes the configuration and next time connection is found immediately.

Appeared information window describes actual data logger state. Example of the window look (window differs for different data logger models).

Minimum required data logger settings:

- data logger switch ON (tick *Logger switched ON* field)
- setting of logging interval (select at *Interval* field)
- select logging mode. Tick *Cyclic logging* - oldest recorded values will be replaced by new values after fulfilling the memory. If *Cyclic logging* is not ticked, record stops after fulfilling the memory. Also check the field *Memory occupation*.
- check correct date and time in data logger (*Date and time* field). If time or date is not correct, set by means of the *Set time and date* button.

Confirm correct setting by the *Write to data logger* button. From now data logger records measured values accordingly with adjusted parameters. Unplug the communication adapter from guide slots of data logger.

Data logger activity is indicated on the LCD display or by indication LEDs:

- models Sxxxx with display have symbol LOG at left bottom corner visible
- yellow LED (LOG) blinks once at 10 seconds with no display models Rxxxx

#### 4) Installation of data logger at monitored location

Locate data logger (or its external probe - if exists) to the monitored location. If needed optional wall holder with lock is possible to use.

#### 5) Reading of recorded data

Connect data logger to the computer by means of the proper communication adapter (see item 2) to download recorded data to the computer and run PC program to download recorded data.

Select menu item *File / From data logger*, confirm offered file name and click to *Store*. Here suitable file description is possible to enter. Also it is possible to choose if data logger memory will be erased immediately or recorded data will be kept in memory. Then data transfer to computer starts. After finishing the transfer table of measured values appears.

Values outside of data logger range are indicated by hyphens in the table. Also not connected external probe is indicated by hyphens (see example below).

Open file with recorded values archived in computer in similar way as above: use menu item *File / From disk* and select required file.

			T_int	Hum	T_ext
INDEX	Date	Time	°C	%RH	°C
504	12.8.2004	16:07:00	24,3	50,8	---
505	12.8.2004	16:08:00	24,3	51,0	---
506	12.8.2004	16:09:00	24,3	50,9	---
507	12.8.2004	16:10:00	24,2	51,0	---
508	12.8.2004	16:11:00	24,2	51,1	---
509	12.8.2004	16:12:00	24,2	51,0	---
510	12.8.2004	16:13:00	24,2	51,3	---
511	12.8.2004	16:14:00	24,2	51,2	---
512	12.8.2004	16:15:00	24,2	51,0	---
513	12.8.2004	16:16:00	24,2	51,3	---
514	12.8.2004	16:17:00	24,2	51,2	---
515	12.8.2004	16:18:00	24,2	51,0	---
516	12.8.2004	16:19:00	24,2	51,3	---

Graphic display of data from data logger or computer hard disk is available by selection of menu *Display / Graph*.

This brief instruction manual for quick start of data logger does not replace Instruction manual delivered with data logger. Read detailed Instruction manual before use of data logger.